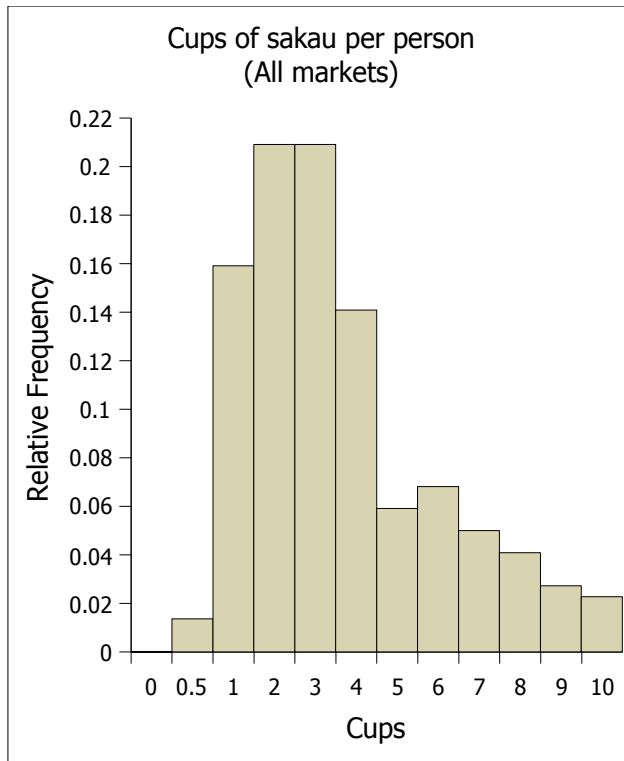


stats

	All	Kitti
sample size n	227	182
min	0.5	0.5
max	15	10
mode	2	1
median	3	3
mean	3.65	3.27
st dev	2.52	2.18
coef var	0.69	0.66

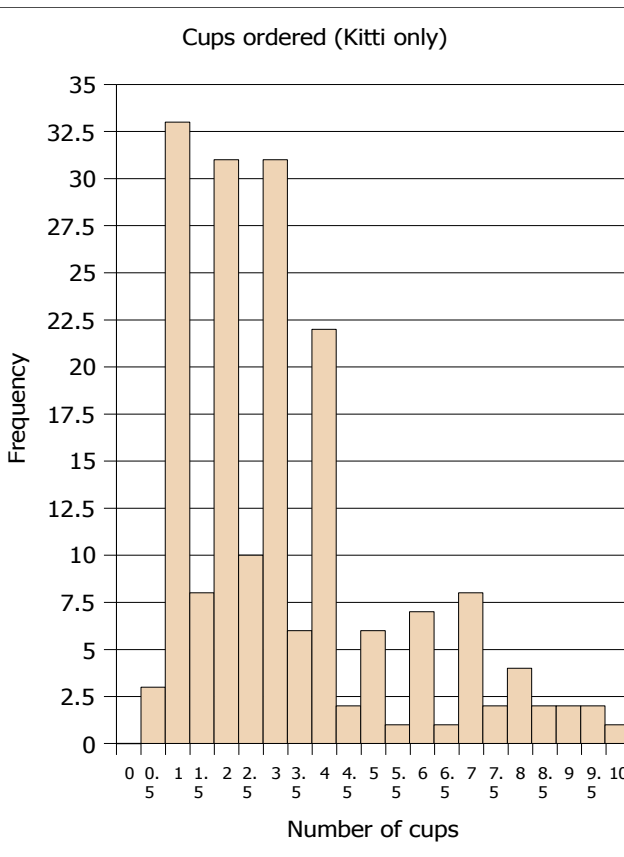


**All markets**

Bins	Freq	RF or P(x)
0	0	0
0.5	3	0.01
1	35	0.16
2	46	0.21
3	46	0.21
4	31	0.14
5	13	0.06
6	15	0.07
7	11	0.05
8	9	0.04
9	6	0.03
10	5	0.02
	220	1

**Kitti Details**

Bins	Freq	RF or P(x)
0	0	0
0.5	3	0.08
1	33	0.87
1.5	8	0.21
2	31	0.82
2.5	10	0.26
3	31	0.82
3.5	6	0.16
4	22	0.58
4.5	2	0.05
5	6	0.16
5.5	1	0.03
6	7	0.18
6.5	1	0.03
7	8	0.21
7.5	2	0.05
8	4	0.11
8.5	2	0.05
9	2	0.05
9.5	2	0.05
10	1	0.03



stats

	38	1
--	----	---

**Cups data**

Sum - Cups	Day				Total Result
Market	n	p	q	r	
Nan kahp	38.5	47.5			<b>86</b>
Pwopwida	59	80.5	59.5		<b>199</b>
Song mahs	117	61	64.5	68	<b>310.5</b>
<b>Total Result</b>	<b>214.5</b>	<b>189</b>	<b>124</b>	<b>68</b>	<b>595.5</b>

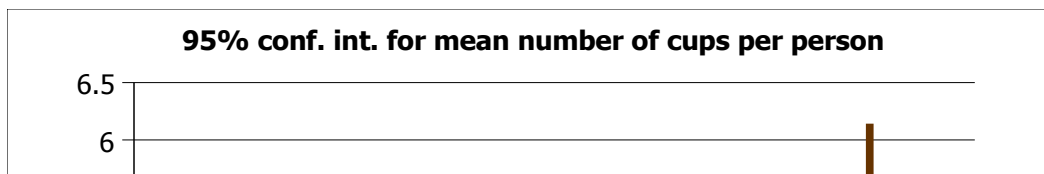
Average - Cups	Day				Total Result
Market	n	p	q	r	
Nan kahp	3.21	3.17			<b>3.19</b>
Pwopwida	3.11	2.78	2.13		<b>2.62</b>
Song mahs	4.03	3.81	3.79	4	<b>3.93</b>
<b>Total Result</b>	<b>3.58</b>	<b>3.15</b>	<b>2.76</b>	<b>4</b>	<b>3.27</b>

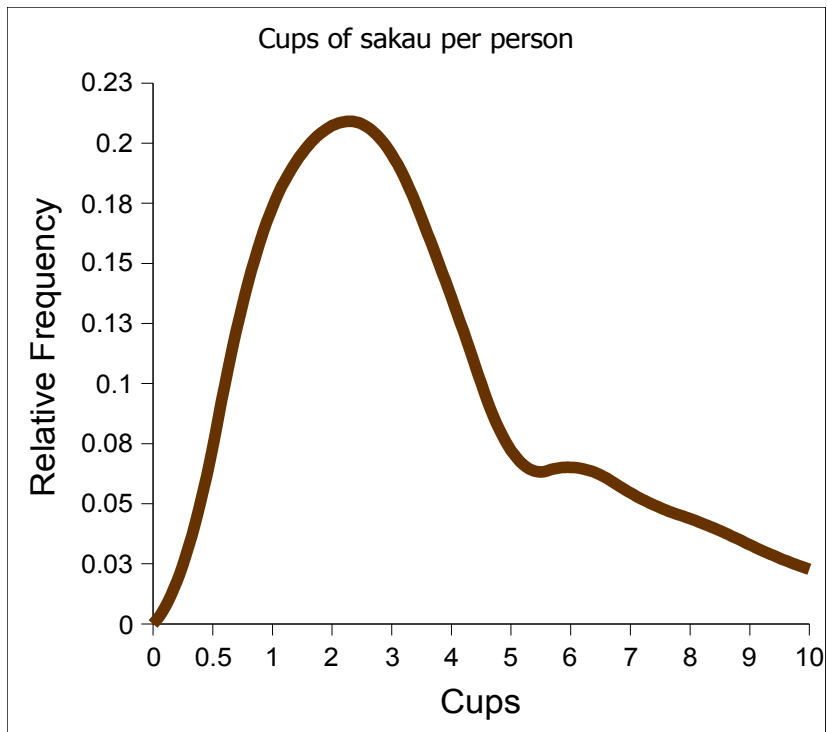
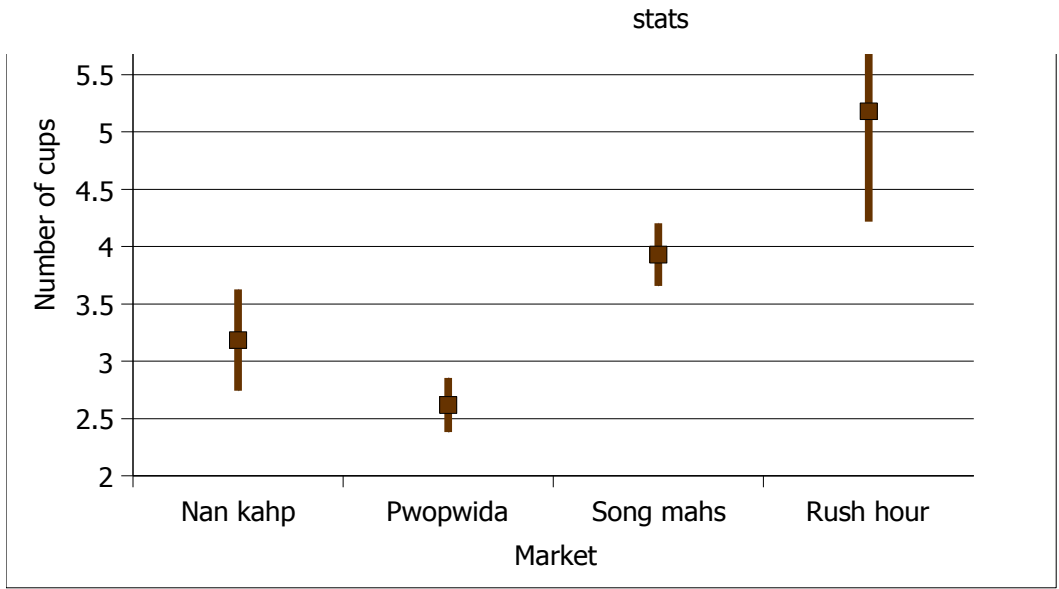
StDev - Cups	Day				Total Result
Market	n	p	q	r	
Nan kahp	2.66	1.53			<b>2.06</b>
Pwopwida	1.89	1.68	1.46		<b>1.69</b>
Song mahs	2.61	2.06	2.31	2.81	<b>2.44</b>
<b>Total Result</b>	<b>2.42</b>	<b>1.78</b>	<b>1.98</b>	<b>2.81</b>	<b>2.18</b>

**Customer counts**

Count - Cups	Day				Total Result
Market	n	p	q	r	
Nan kahp	12	15			<b>27</b>
Pwopwida	19	29	28		<b>76</b>
Song mahs	29	16	17	17	<b>79</b>
<b>Total Result</b>	<b>60</b>	<b>60</b>	<b>45</b>	<b>17</b>	<b>182</b>

Market	low	high	mean
Nan kahp	2.74	3.63	3.19
Pwopwida	2.38	2.85	2.62
Song mahs	3.66	4.2	3.93
Rush hour	4.22	6.14	5.18





stats

---

sakau cups data

Market	Day	Cups
Pwopwida	n	8.5
Pwopwida	n	1
Pwopwida	n	5
Pwopwida	n	2.5
Pwopwida	n	1.5
Pwopwida	n	3
Pwopwida	n	3
Pwopwida	n	3
Pwopwida	n	4
Pwopwida	n	3
Pwopwida	n	3
Pwopwida	n	2
Pwopwida	n	2
Pwopwida	n	4
Pwopwida	n	6
Pwopwida	n	1
Pwopwida	n	3.5
Pwopwida	n	0.5
Pwopwida	n	2.5
Pwopwida	p	2
Pwopwida	p	3
Pwopwida	p	2
Pwopwida	p	4
Pwopwida	p	2
Pwopwida	p	4
Pwopwida	p	1
Pwopwida	p	4.5
Pwopwida	p	2
Pwopwida	p	2
Pwopwida	p	7.5
Pwopwida	p	4
Pwopwida	p	2
Pwopwida	p	3
Pwopwida	p	3
Pwopwida	p	2.5
Pwopwida	p	2
Pwopwida	p	1
Pwopwida	p	4
Pwopwida	p	1
Pwopwida	p	3
Pwopwida	p	7
Pwopwida	p	4
Pwopwida	p	2
Pwopwida	p	4
Pwopwida	p	1
Pwopwida	p	1
Pwopwida	p	1
Pwopwida	p	1

sakau cups data

Pwopwida	q	1.5
Pwopwida	q	1
Pwopwida	q	4
Pwopwida	q	4
Pwopwida	q	3
Pwopwida	q	2
Pwopwida	q	1
Pwopwida	q	1
Pwopwida	q	2
Pwopwida	q	1
Pwopwida	q	1
Pwopwida	q	1
Pwopwida	q	1
Pwopwida	q	7.5
Pwopwida	q	3
Pwopwida	q	1.5
Pwopwida	q	2
Pwopwida	q	1
Pwopwida	q	4
Pwopwida	q	2
Pwopwida	q	1
Pwopwida	q	1.5
Pwopwida	q	2
Pwopwida	q	2.5
Pwopwida	q	3
Pwopwida	q	1
Pwopwida	q	3
Pwopwida	q	1
Nan kahp	n	6
Nan kahp	n	1
Nan kahp	n	5
Nan kahp	n	9.5
Nan kahp	n	2
Nan kahp	n	2
Nan kahp	n	1
Nan kahp	n	5
Nan kahp	n	1
Nan kahp	n	3
Nan kahp	n	1
Nan kahp	n	2
Nan kahp	p	4
Nan kahp	p	3
Nan kahp	p	2.5
Nan kahp	p	1.5
Nan kahp	p	4
Nan kahp	p	1
Nan kahp	p	2.5
Nan kahp	p	2
Nan kahp	p	7

sakau cups data

Nan kahp p	3
Nan kahp p	3
Nan kahp p	5
Nan kahp p	1.5
Nan kahp p	3.5
Nan kahp p	4
Song mahs n	3
Song mahs n	3
Song mahs n	3.5
Song mahs n	3.5
Song mahs n	2
Song mahs n	3
Song mahs n	4
Song mahs n	1
Song mahs n	8
Song mahs n	3
Song mahs n	9
Song mahs n	3
Song mahs n	7
Song mahs n	6
Song mahs n	7
Song mahs n	10
Song mahs n	5
Song mahs n	4
Song mahs n	2
Song mahs n	2
Song mahs n	0.5
Song mahs n	1.5
Song mahs n	7
Song mahs n	2
Song mahs n	3.5
Song mahs n	1.5
Song mahs n	1
Song mahs n	8
Song mahs n	3
Song mahs p	2
Song mahs p	3
Song mahs p	6
Song mahs p	3
Song mahs p	3.5
Song mahs p	4.5
Song mahs p	1
Song mahs p	5
Song mahs p	8
Song mahs p	3
Song mahs p	7
Song mahs p	4
Song mahs p	2.5
Song mahs p	5.5

sakau cups data

Song mahs p	2
Song mahs p	1
Song mahs q	4
Song mahs q	3
Song mahs q	4
Song mahs q	2.5
Song mahs q	2
Song mahs q	2.5
Song mahs q	7
Song mahs q	6
Song mahs q	2
Song mahs q	3
Song mahs q	1
Song mahs q	3
Song mahs q	2
Song mahs q	1
Song mahs q	6.5
Song mahs q	6
Song mahs q	9
Song mahs r	3
Song mahs r	4
Song mahs r	4
Song mahs r	2
Song mahs r	2
Song mahs r	6
Song mahs r	8
Song mahs r	8.5
Song mahs r	9.5
Song mahs r	4
Song mahs r	2
Song mahs r	3
Song mahs r	2.5
Song mahs r	1
Song mahs r	7
Song mahs r	0.5
Song mahs r	1
Rush hour n	2
Rush hour n	10
Rush hour n	1.5
Rush hour n	5.5
Rush hour n	9
Rush hour n	7.5
Rush hour n	5.5
Rush hour n	3
Rush hour n	3
Rush hour n	6
Rush hour n	3
Rush hour n	4.5
Rush hour n	10



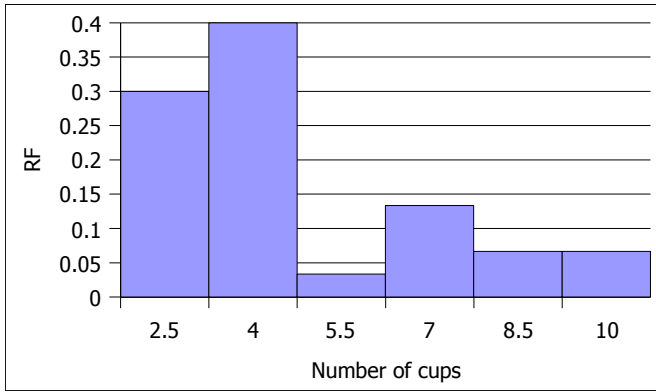
sakau cups data

Rush hour	n	9
Rush hour	n	2
Rush hour	n	2
Rush hour	n	4
Rush hour	n	5
Rush hour	n	5
Rush hour	n	5.5
Rush hour	n	15
Rush hour	n	14
Rush hour	n	2
Rush hour	n	2
Rush hour	n	4
Rush hour	p	7
Rush hour	p	8
Rush hour	p	1
Rush hour	p	3
Rush hour	p	2.5
Rush hour	p	4.5
Rush hour	p	6
Rush hour	p	8
Rush hour	p	6
Rush hour	p	5
Rush hour	p	5.5
Rush hour	p	6.5
Rush hour	p	1
Rush hour	p	4
Rush hour	p	2
Rush hour	p	1
Rush hour	p	3
Rush hour	p	6
Rush hour	p	5
Rush hour	p	8

fx

**Cups**

level	ratio
1 size n	<b>30</b>
1 mean	<b>4.0167</b>
1 median	<b>3</b>
1.5 mode	<b>3</b>
1.5 min	<b>1</b>
2 max	<b>10</b>
2 range	<b>9</b>
2 stdev	<b>2.5478</b>
2 cv	<b>0.63</b>
3 bins	<b>6</b>
3 width	<b>1.50000</b>



Bins	Freq	RF
2.5	9	0.3
4	12	0.4
5.5	1	0.03
7	4	0.13
8.5	2	0.07
10	2	0.07
	30	1

V Market	dist	mean
Nan kahp	14	3.19
Pwopwida	15.5	2.62
Song mahs	13.5	3.93
Rush hour	3	5.18

4	<b>II</b>	
5	est pop $\mu$	<b>2.91</b>
6	mode	<b>3</b>
7	probability	<b>0.2</b>
7	median	<b>3</b>
7	<b>III</b>	
8	pt est	<b>3.19</b>
8	df	<b>26</b>
9	$t_c$	<b>2.0555</b>
10	E	<b>0.8149</b>

slope	<b>-0.1798</b>	-0.18
intercept	<b>5.7982</b>	5.8
correl	negative	
	10	<b>3.9998</b>
	<b>4.4385</b>	<b>5</b>
correl r	<b>-0.9322</b>	
level of corr	<b>high/strong</b>	
coef det	<b>0.87</b>	
% variation	<b>87%</b>	
No choice	<b>5.8</b>	
mean is 0	<b>32.24</b>	

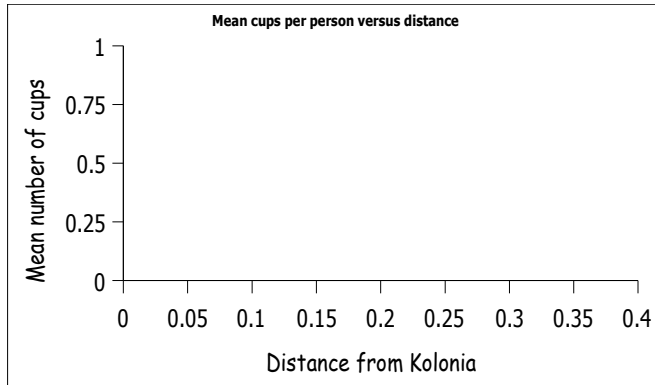
**2.3751**  $\leq \mu \leq$  **4.0049**  
 poss pop  $\mu$  **Yes**  
 sig diff **No**

**IV**

**$H_0: \mu = 3.65$**

**$H_1: \mu \neq 3.65$**

$t_c$	<b>2.06</b>
t	<b>-1.16</b>
p-value	<b>0.26</b>
max c	<b>0.74</b>
Status?	<b>Fail to reject</b>
min type I	<b>0.26</b>
sig diff	<b>No</b>



pivots

**Cups data**

Filter

Sum - Cups	Day				
Market	n	p	q	r	Total Result
Nan kahp	38.5	47.5			<b>86</b>
Pwopwida	59	80.5	59.5		<b>199</b>
Rush hour	140	93			<b>233</b>
Song mahs	117	61	64.5	68	<b>310.5</b>
<b>Total Result</b>	<b>354.5</b>	<b>282</b>	<b>124</b>	<b>68</b>	<b>828.5</b>

Filter

Average - Cups	Day				
Market	n	p	q	r	Total Result
Nan kahp	3.21	3.17			<b>3.19</b>
Pwopwida	3.11	2.78	2.13		<b>2.62</b>
Rush hour	5.6	4.65			<b>5.18</b>
Song mahs	4.03	3.81	3.79	4	<b>3.93</b>
<b>Total Result</b>	<b>4.17</b>	<b>3.53</b>	<b>2.76</b>	<b>4</b>	<b>3.65</b>

Filter

StDev - Cups	Day				
Market	n	p	q	r	Total Result
Nan kahp	2.66	1.53			<b>2.06</b>
Pwopwida	1.89	1.68	1.46		<b>1.69</b>
Rush hour	3.73	2.37			<b>3.2</b>
Song mahs	2.61	2.06	2.31	2.81	<b>2.44</b>
<b>Total Result</b>	<b>2.99</b>	<b>2.03</b>	<b>1.98</b>	<b>2.81</b>	<b>2.52</b>

Customer counts

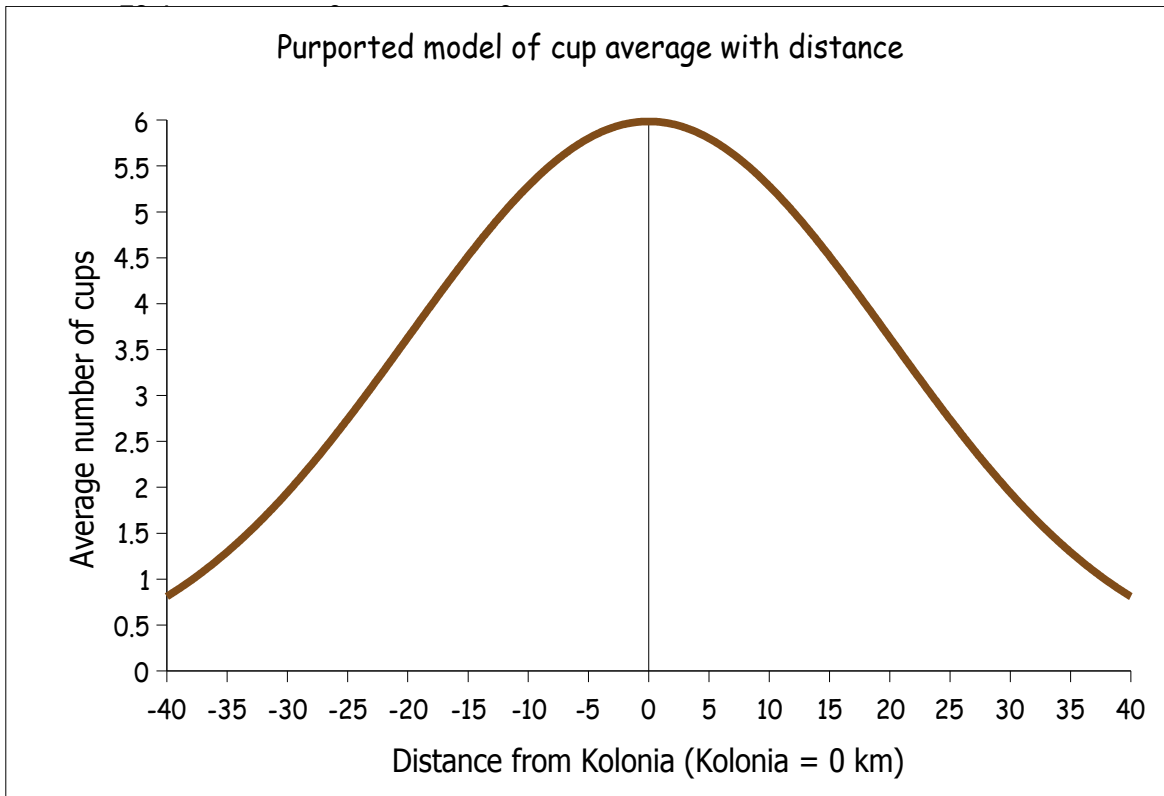
Filter

Count - Cups	Day				
Market	n	p	q	r	Total Result
Nan kahp	12	15			<b>27</b>
Pwopwida	19	29	28		<b>76</b>
Rush hour	25	20			<b>45</b>
Song mahs	29	16	17	17	<b>79</b>
<b>Total Result</b>	<b>85</b>	<b>80</b>	<b>45</b>	<b>17</b>	<b>227</b>

strength model

Mean 0.0000  
 StDev 20.0000  
 min mean 0  
 max mean 0  
 mid mean 0  
 min stdev 20  
 max stdev 20  
 stdevs 4  
 start -80  
 end 80  
 increment 1.6  
 multiplier 300

x	p(x)	Cups
-80	0	0



-41.6	0	0.69
-40	0	0.81
-38.4	0	0.95
-36.8	0	1.1
-35.2	0	1.27
-33.6	0	1.46
-32	0.01	1.66
-30.4	0.01	1.88
-28.8	0.01	2.12
-27.2	0.01	2.37
-25.6	0.01	2.64

strength model

-24	0.01	2.91
-22.4	0.01	3.2
-20.8	0.01	3.48
-19.2	0.01	3.77
-17.6	0.01	4.06
-16	0.01	4.35
-14.4	0.02	4.62
-12.8	0.02	4.88
-11.2	0.02	5.12
-9.6	0.02	5.33
-8	0.02	5.52
-6.4	0.02	5.69
-4.8	0.02	5.81
-3.2	0.02	5.91
-1.6	0.02	5.97
0	0.02	5.98
1.6	0.02	5.97
3.2	0.02	5.91
4.8	0.02	5.81
6.4	0.02	5.69
8	0.02	5.52
9.6	0.02	5.33
11.2	0.02	5.12
12.8	0.02	4.88
14.4	0.02	4.62
16	0.01	4.35
17.6	0.01	4.06
19.2	0.01	3.77
20.8	0.01	3.48
22.4	0.01	3.2
24	0.01	2.91
25.6	0.01	2.64
27.2	0.01	2.37
28.8	0.01	2.12
30.4	0.01	1.88
32	0.01	1.66
33.6	0	1.46
35.2	0	1.27
36.8	0	1.1
38.4	0	0.95
40	0	0.81
41.6	0	0.69
43.2	0	0.58
44.8	0	0.49
46.4	0	0.41
48	0	0.34
49.6	0	0.28
51.2	0	0.23
52.8	0	0.18

strength model

54.4	0	0.15
56	0	0.12
57.6	0	0.09
59.2	0	0.07
60.8	0	0.06
62.4	0	0.05
64	0	0.04
65.6	0	0.03
67.2	0	0.02
68.8	0	0.02
70.4	0	0.01
72	0	0.01
73.6	0	0.01
75.2	0	0.01
76.8	0	0
78.4	0	0
80	0	0