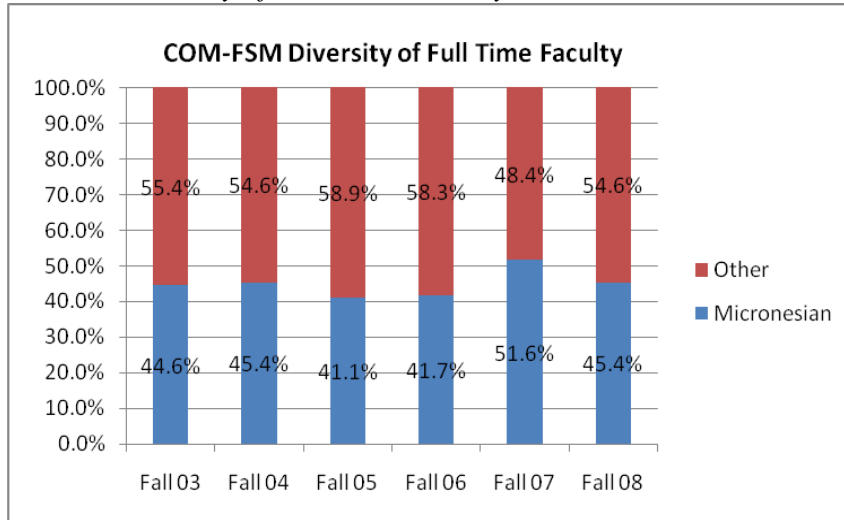


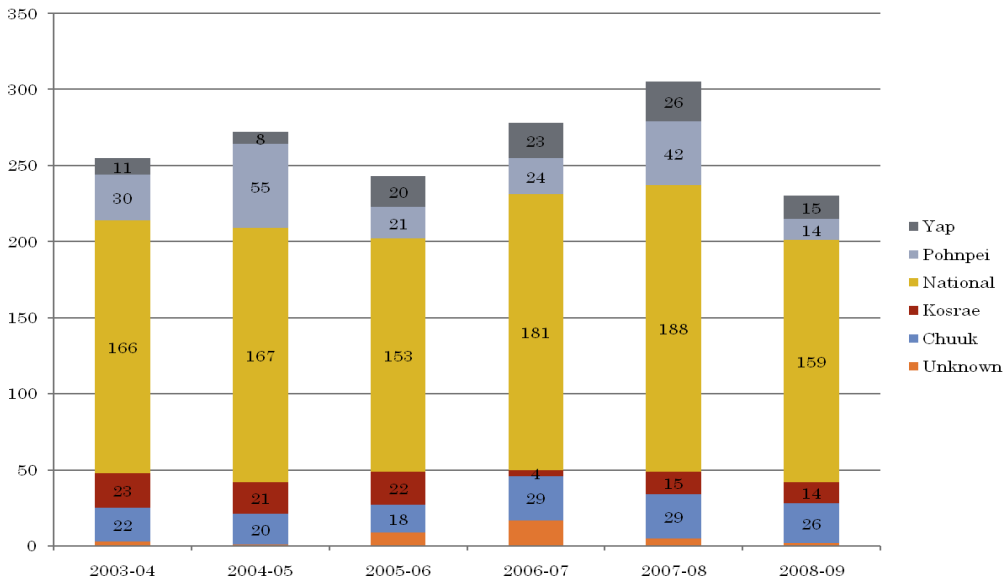
LONGITUDINAL STUDENT ACHIEVEMENT DATA

Chart 1. Diversity of Full Time Faculty



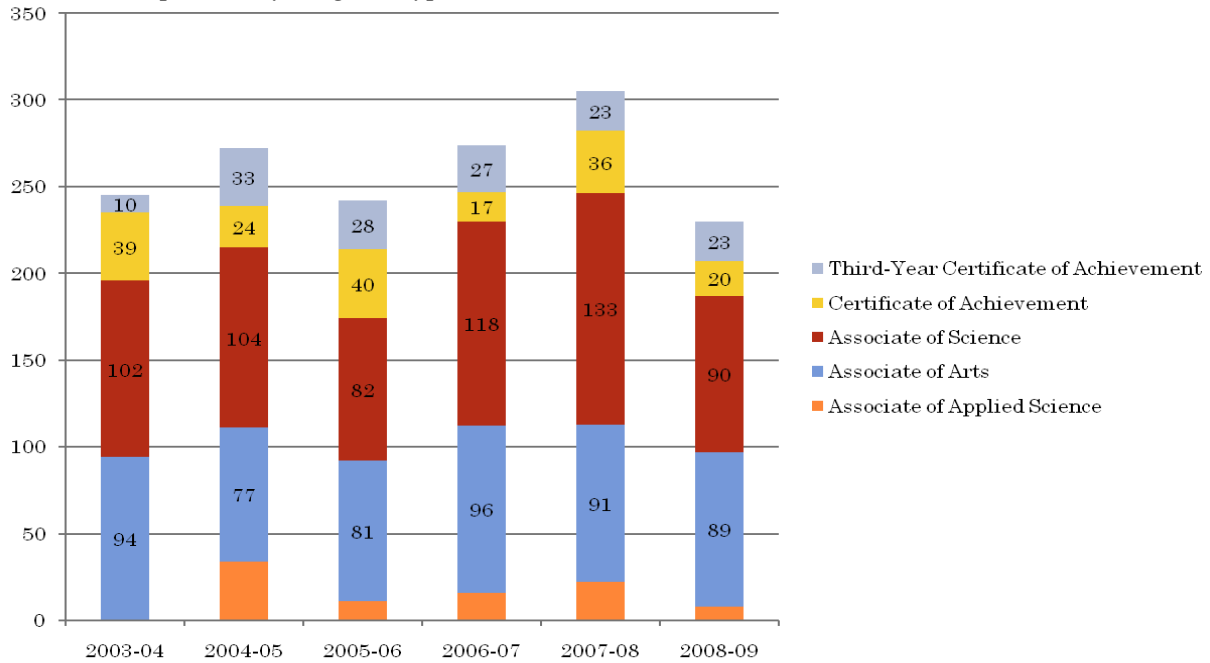
The college is maintaining a diverse full time teaching faculty. While the composition changes each year, the faculty represents all FSM states, United States, Philippines and other countries.

Chart 2. Completers by Year and Site



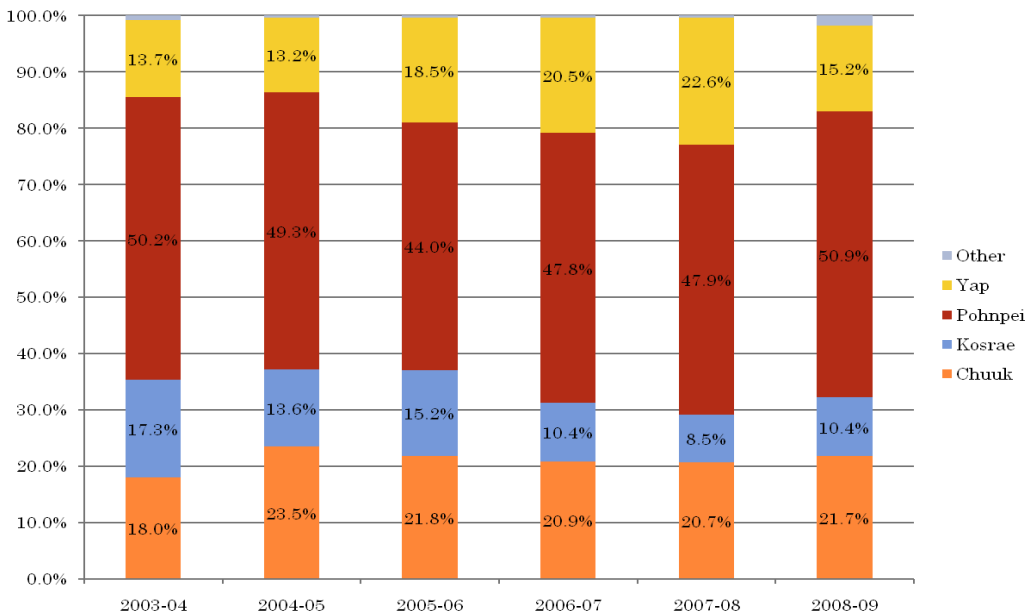
The college’s program completer data has seen some variations, primarily due to the teach-out at Chuuk site. There has also been concern that program completers are being under reported for certificate programs due to the fact that student move into an associate degree program without formal completion or without applying for a certificate degree. The college has set as an objective in its performance planning to develop mechanisms to fully count certificate completers.

Chart 3. Completers by Degree Type



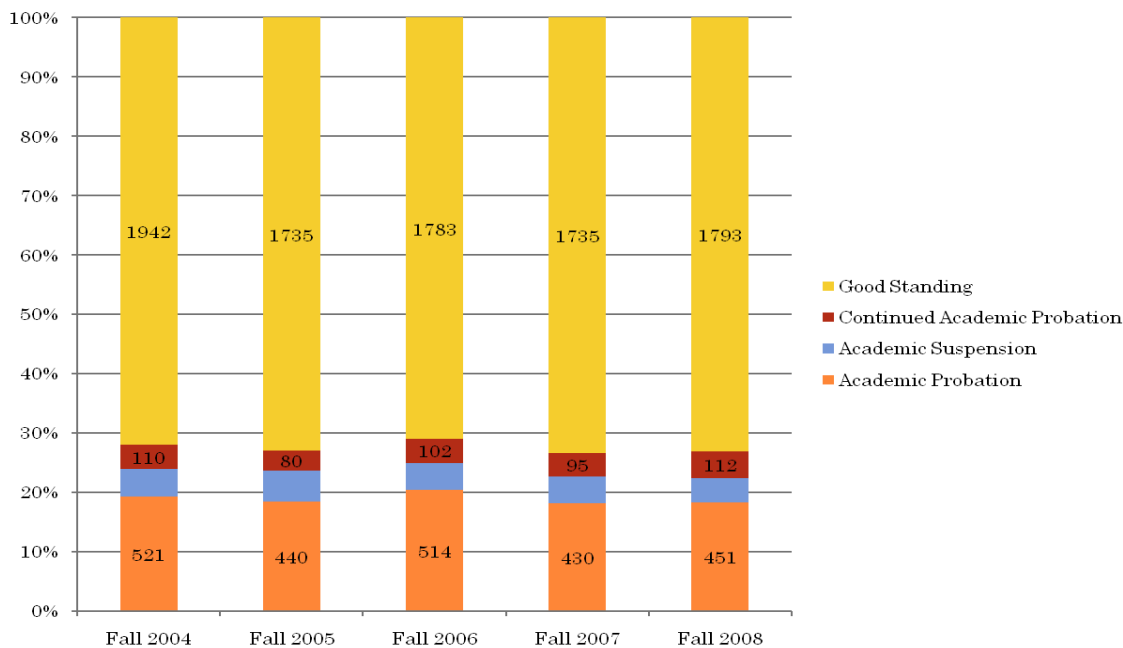
As noted above, there is concern over the number of certificate program completers especially as certificate students currently represent 44% of the student population but less than 10% of program completers.

Chart 4. Completers by State of Origin



The college program completers as seen by state of origin shows Kosrae, Pohnpei and Yap having a higher percent of completers as completed to population distribution by FSM states with Chuuk completers representing less than half of their FSM population distribution. As noted earlier, the college is working with the Chuuk department of education to enhance the number of K-12 graduates being college ready through site based teacher training programs.

Chart 5. Enrollment by Academic Standing



Overall academic performance of students being in good academic standing (2.00 cumulative GPA or above) is fairly consistent at ~ 70% or above. However, the college is tracking the academic standing of students at its various sites to ensure consistency and continuity of programs and services.

Chart 6. Percentage of Students in Good Academic Standing by Site

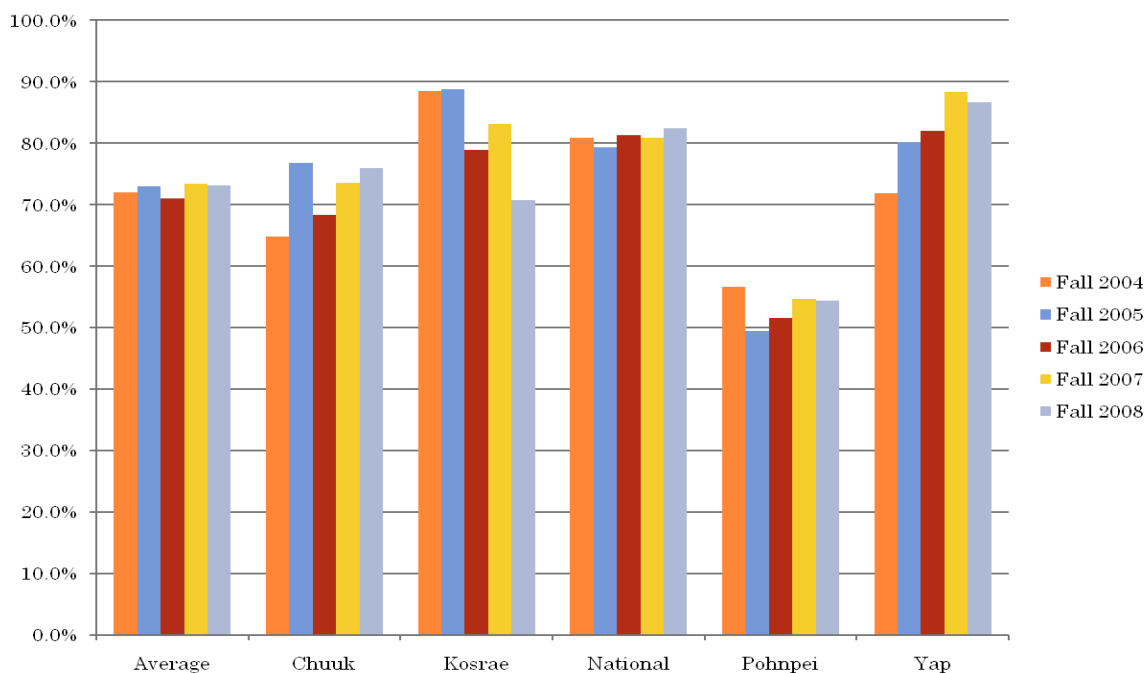
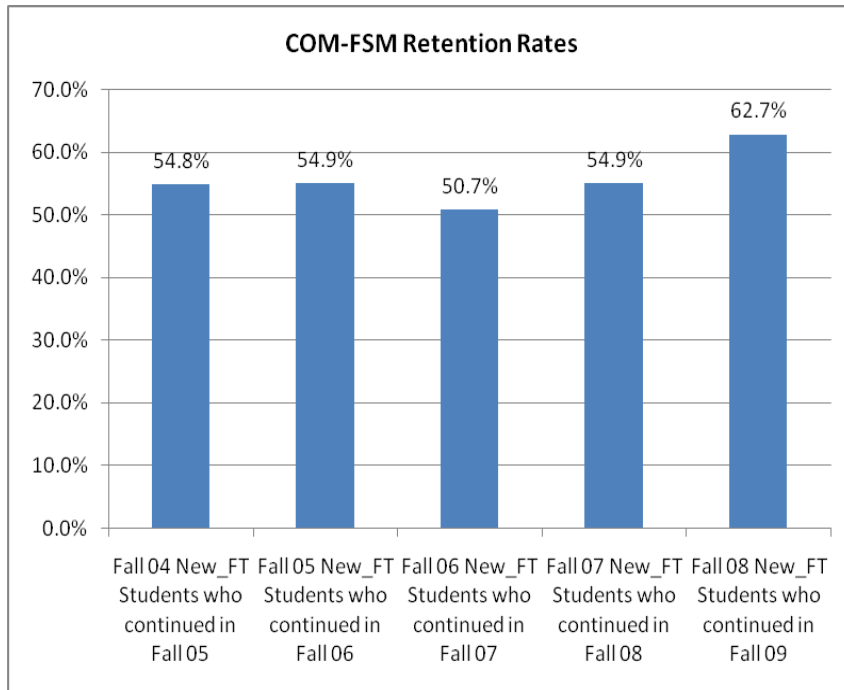
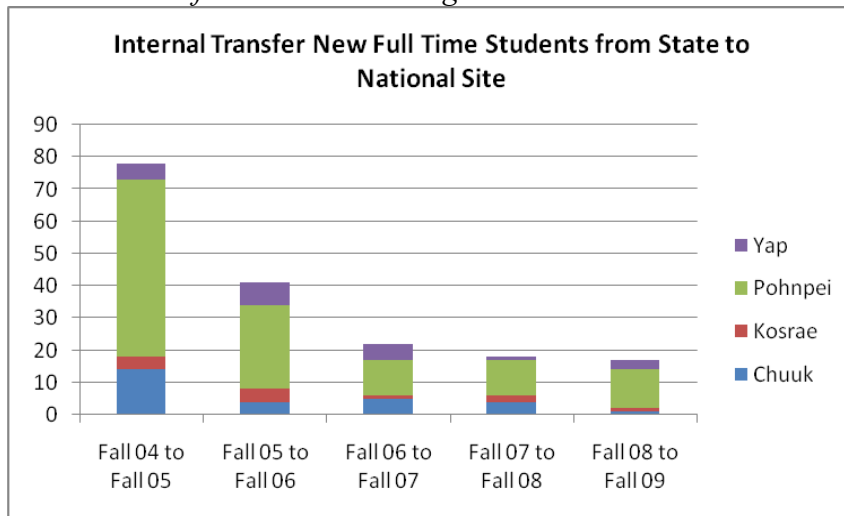


Chart 7. Retention Rates



The college has placed a priority on retention in the past two years and has seen an increase of over 12% since fall 2006. The college is working to maintain or improve these levels and use the increased retention as a springboard to improved program completer figures.

Chart 8. Transfer within the College's Sites.



Internal transfers within the college (state sites to national site) have decreased due to more students remaining in their home state to work on general education requirements.

Transfer information to Pacific Post Secondary Schools (PPEC)

Following is transfer information related to COM-FSM students attending PPEC four year institutions. The PPEC is developing systems to track member institutions' transfer rates and academic achievement after transfer.

Table 1. Transfer to UOG 2003 to 2009

Transfer information for COM-FSM Students to University of Guam February 2003 to June 2009			
	Male	Female	Total
Total transfers	53	40	93
Total graduates (BA)			19
	Avg Term GPA	Avg CUM GPA	Avg Credit Hours
Academic standing (GPA)	2.23	2.876	11

Table 2. Transfer to UH Hilo 2003 to 2007

Transfer information for COM-FSM Students to University of Hawaii Hilo Fall 2003 - fall 2007						
	Total Student Count	Avg Transfer Credits	No degree	AA	AS	CERT
Total transfers	132	46.8	78	35	20	1

Table 3. Transfer to UH Hilo Summary

COM-FSM Transfer - Summary Enrollment & Graduates UH-Hilo			
	Male	Female	Total
Total transfers	79	53	132
Total graduates			27

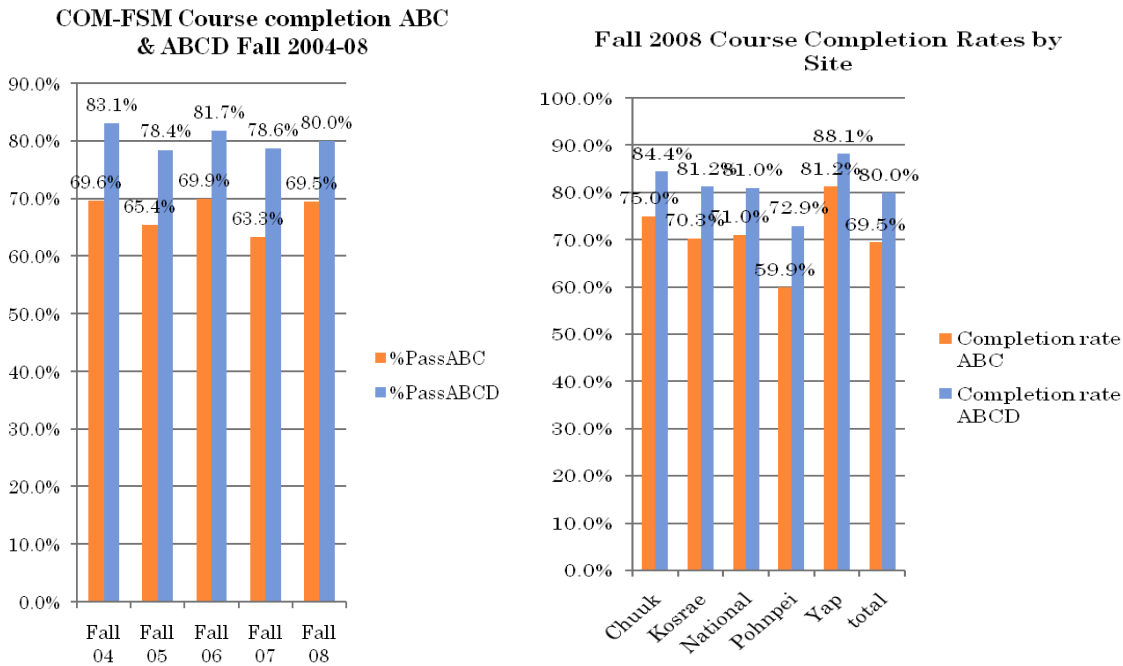
Table 4. Transfer to UH Hilo Academic Standing 2003 to 2007

COM-FSM Transfer Students - UH-Hilo Academic Standing				
Term	#Enrolled End of Semester	Avg Credit Hours	Avg Term GPA	Avg Cum GPA
Fall 2003	48	12.88	2.12	2.21
Spring 2004	53	12.60	2.09	2.13
Summer 2004	4	3.00	2.67	2.52
Fall 2004	47	12.57	2.32	2.32
Spring 2005	53	12.89	2.37	2.32
Summer 2005	11	4.09	3.24	2.45
Fall 2005	65	12.75	2.15	2.31
Spring 2006	65	12.06	2.27	2.38
Summer 2006	2	3.00	2.50	1.99
Fall 2006	70	11.96	2.24	2.33

Spring 2007	65	11.78	1.83	2.33
Summer 2007	4	3.25	1.75	2.30

Transfer students to University of Guam and University of Hawaii – Hilo are generally doing well as seen by the term and cumulative GPAs. The college is working on developing tracking mechanisms to address COM-FSM students at other institutions of higher education.

Chart 9. Completion rate 2004 to 2008



The college is tracing course completion at both ABC and ABCD passing rates. The college catalog currently defines “D” as passing, but there is concern that for a number of courses and courses for program majors, students cannot advance with a “D” course grade. The definition of course completion is currently under discussion in the college’s curriculum committee.

Chart 10. FSM-FMI Graduates by State of Origin 2003 to 2009

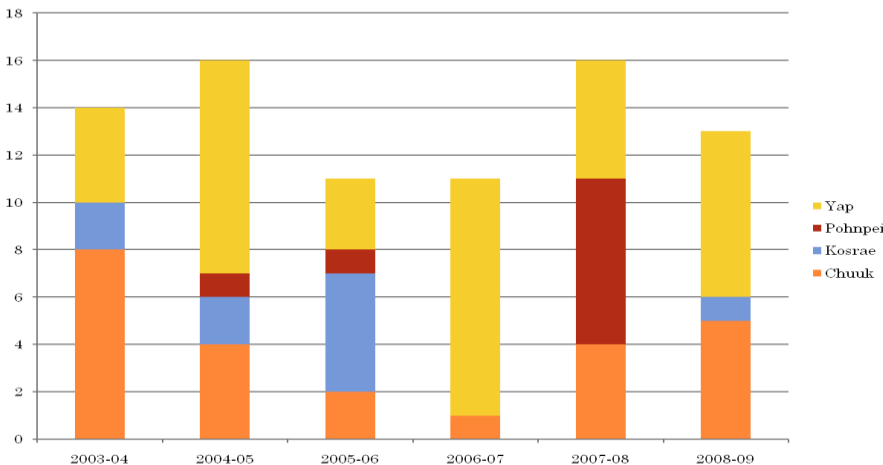


Chart 11. Board-Approved Budget Allocations FY 2005 to FY 2011

