

**Board of Regents
College of Micronesia-FSM
August 2013 – National Campus**

**Data Overview Covering Spring 2013, Summer
2013 and Initial Data Fall 2013**



**Office of Institutional Research and Planning
Department of Institutional Effectiveness and Quality Assurance**

Contents

Overview	1
Spring 2013	1
Summer 2013.....	7
Fall 2013.....	8
Graduation Rates and Graduates.....	10

Figures

Figure 1 Spring 2013 enrollment data	1
Figure 2 Four (4) year enrollment by campus and college	2
Figure 3 Credits by campus and total credits.....	2
Figure 4 Average credits by campus and percent of full time students	3
Figure 5 Course completion spring 2013 and 4 year comparison	3
Figure 6 Course competition for general education (selected) and percent of withdrawals.....	4
Figure 7 Academic standing	4
Figure 8 Graduates by campus, degree, gender and state of origin.....	5
Figure 9 Summer 2013 enrollment and credit data.....	7
Figure 10 Summer semester multi-year comparison	7
Figure 11 Fall 2013 enrollment and credits	8
Figure 12 Fall enrollment trends.....	9
Figure 13 Fall semester credit trends	9
Figure 14 Fall semester retention trends.....	10
Figure 15 Fall 2013 age distribution.....	10
Figure 16 Graduation rates for new fall cohorts in 2010, 2009 and 2008.....	11
Figure 17 Graduation multi-year summary by academic year	12

Overview

This overview covers data on enrollment and student achievement for spring 2013, summer 2013, initial enrollment data for fall 2013 and summary data for graduates and graduation rates through academic year 2012/13. While some data provides snapshots of specific semesters, the focus is on multi-year comparisons to provide a perspective on trends affecting the college.

Spring 2013

Additional detail and information related to spring 2013 can be found on the IRPO website at <http://www.comfsm.fm/?q=irpo-enrollment> (semester data report) and <http://www.comfsm.fm/?q=irpo-semester-data> (semester data files).

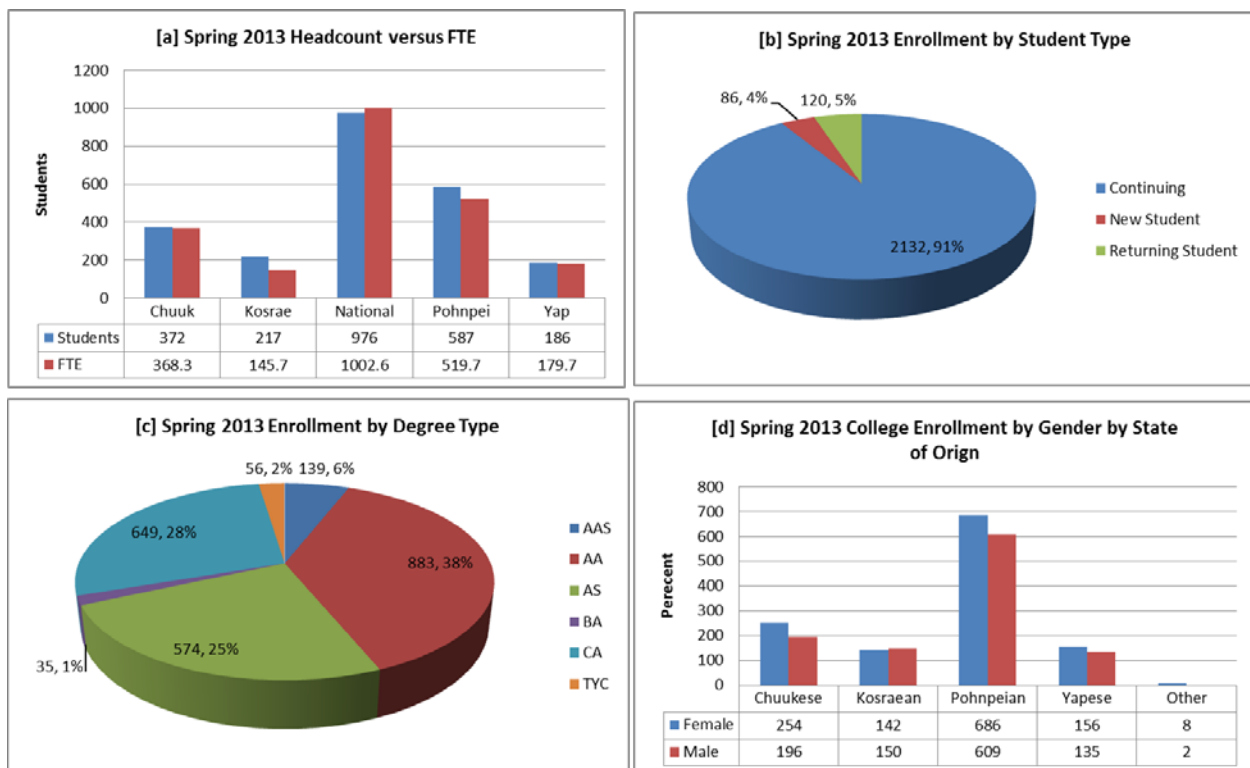


Figure 1 Spring 2013 enrollment data

In figure 1 we can see [a] total spring 2013 enrollment of 2338 students and a Full Time Equivalence (FTE)¹ of 2215.9. In terms of student type [b], 91% of students are continuing with 4% new students and 5% returning² students. [c] Associate of arts

¹ FTE is calculated by taking total credits and dividing by 12 credits.

² Returning students are those students have been out of school for over 1 year.

and science students compose 68% of the student population followed by 28% of students who are in certificate programs. [d] 55.4% of students are Pohnpeian followed by Chuukese at 19.7%, Kosraeans at 12.5% and Yapese at 12.4%. Non Micronesians represent less than 1% of the college population. Females represent 53.3% of the student population with males at 46.7%.

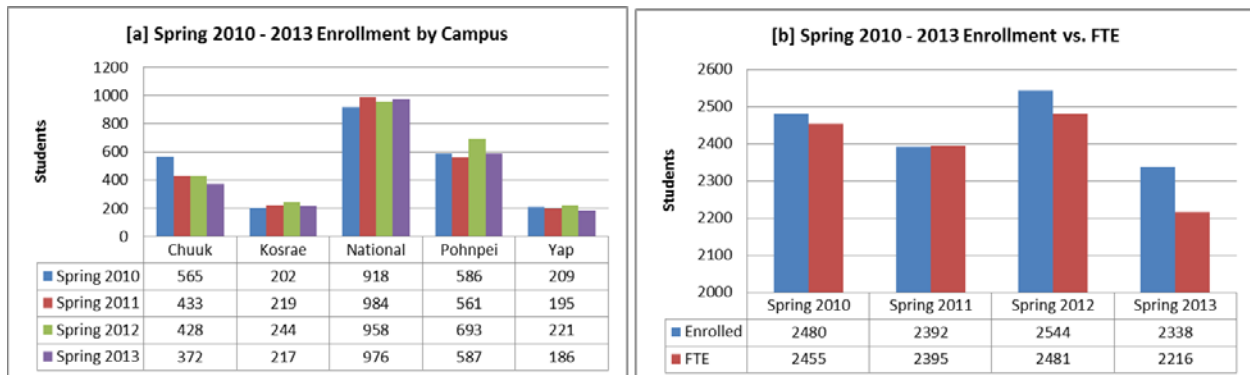


Figure 2 Four (4) year enrollment by campus and college

In figure 2 we can see spring semester comparison data for [a] enrollment at individual campuses varies over the period from spring 2010 – 2013. Overall the past four years enrollment has varied from the current low in spring 2013 enrollment of 2338 to a high enrollment in spring 2012 of 2544, FTE figures show a smaller portion of Full Time Equivalence (FTE) students in spring 2103.

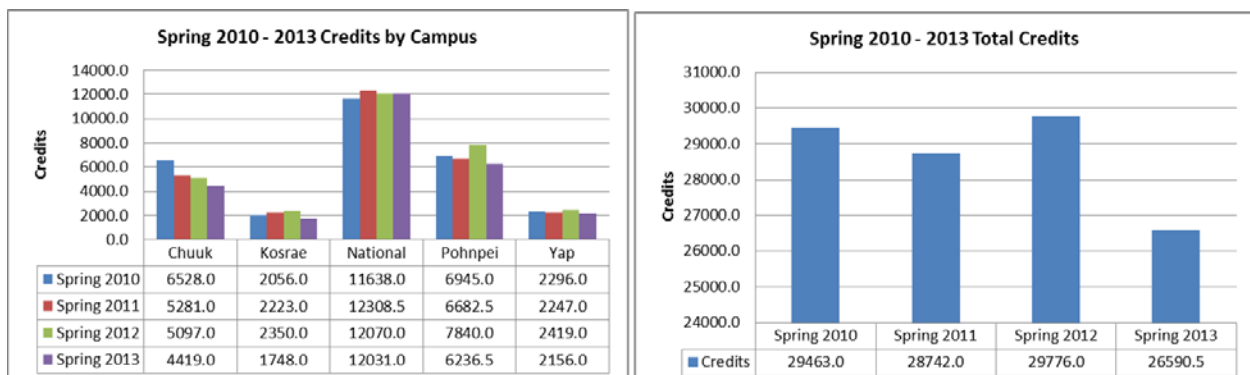


Figure 3 Credits by campus and total credits

Figure 3 shows four year comparisons for spring credits by campuses and total credits for the college. There is a drop of approximately 3,000 credits from spring 2012 to spring 2013. Total credits are affected by both the headcount and the average credits taken by students.

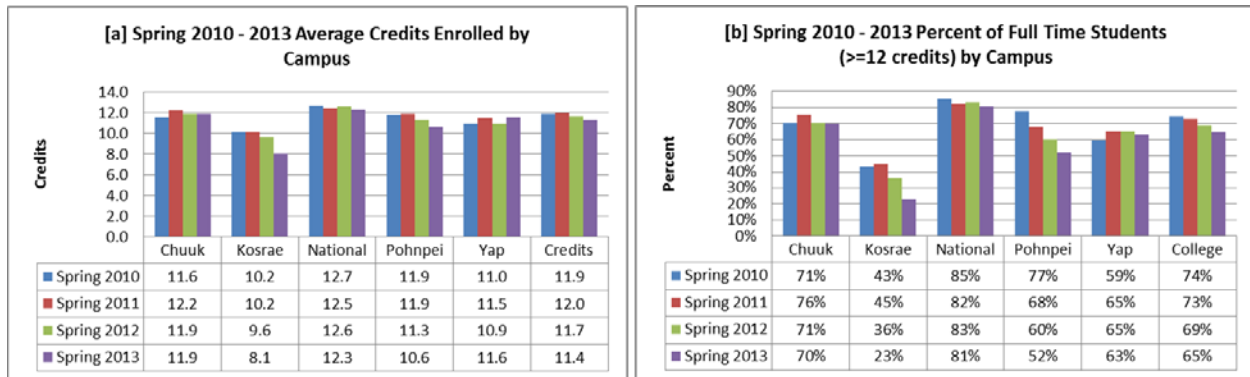


Figure 4 Average credits by campus and percent of full time students

Figure 4 provides four year comparisons for average credits per students and percent of full time students (>=12 credits) and [a] shows a decline in average credits per student from a high of 12.0 credits per student in spring 2011 to 11.4 credits per student in spring 2013. Similar impact of the reduced credits per student can be seen in [b] where the percent of full time students at the college has reduced by 9% from spring 2010 to spring 2013.

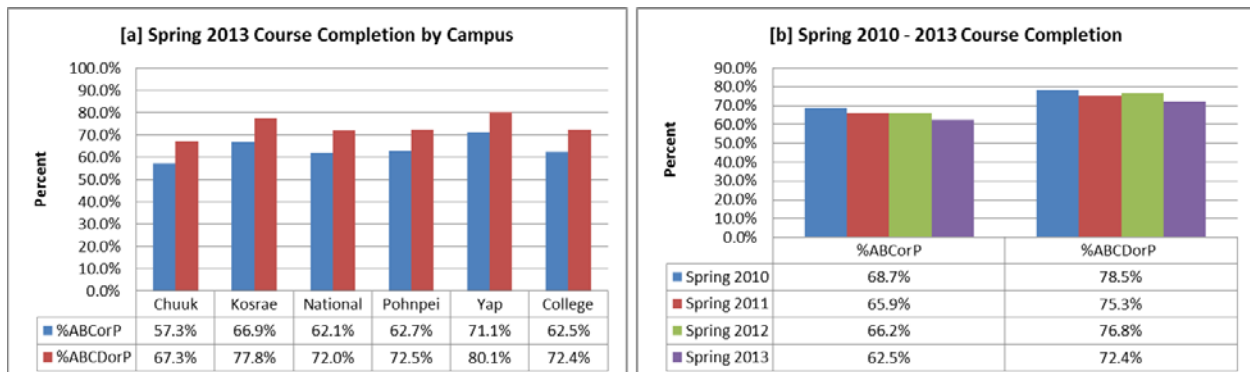


Figure 5 Course completion spring 2013 and 4 year comparison

Figure 5 provides course completion data for spring 2013 and four year comparisons for overall course completion rates (both A,B,C or P grades and A,B,C,D or P grades are provided) [a] by campus. Data is provided for both categories as a “D” grade is listed in the college catalogue as passing, but for a number of courses (such as key general education courses) require a grade of “C” or higher to be considered passing. In the four year comparison [b] data we see a decline in course completion of approximately 6% from spring 2010 to spring 2013.

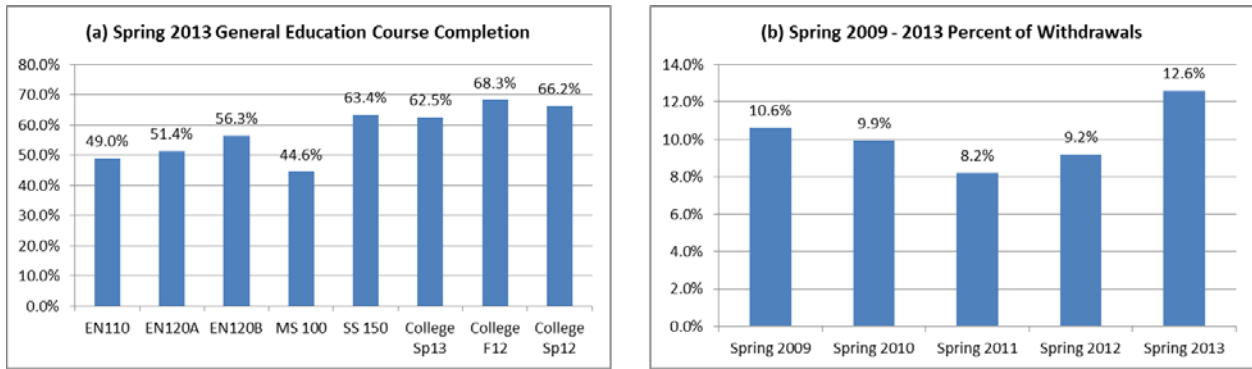


Figure 6 Course competition for general education (selected) and percent of withdrawals

Figure 6 [a] shows spring 2013 courses completion rates for selected general education courses. Course completion rates for EN110, EN120A and MS100 were all 10 percentage points below the college average for spring 2013 of 62.5%. As these course are required and must be passed with a "C" grade or better, students who did not pass with a "C" will have to repeat the course. Withdrawals [b] shows first a decline from spring 2009 to spring 2011, then an increase to the 12.6% level for spring 2013. Withdrawals impact students in several ways. First, a withdrawal (within the specified time) does not impact the student's GPA. Withdrawals do however, mean the student will have to retake the class if it is required and extend her time to degree completion. Changes in financial aid regulations regarding time for completion of degrees also makes it important for students to make progress toward degrees in a timely manner.

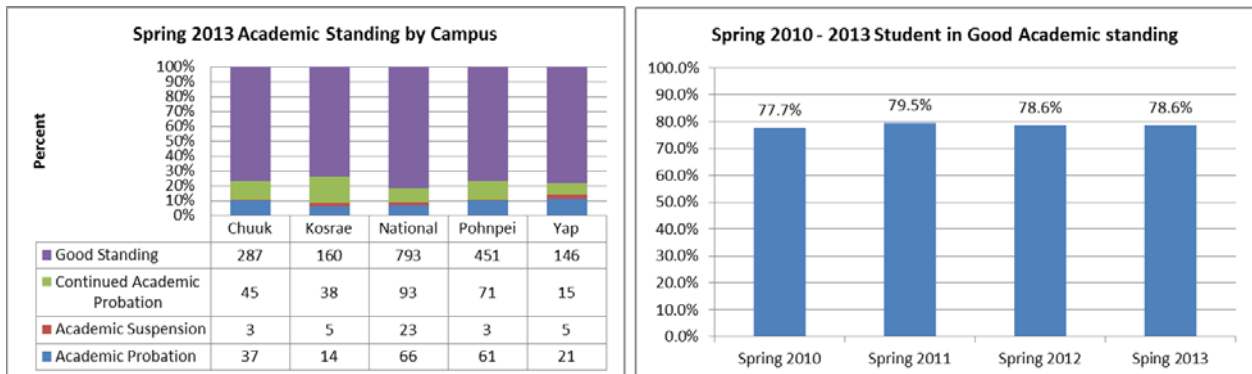


Figure 7 Academic standing

Figure 7 shows academic standing for spring 2013 by campus. Four year trends show a fairly stable percent of students in good academic standing³

³ Good academic standing is defined as having a GPA of 2.00 or higher

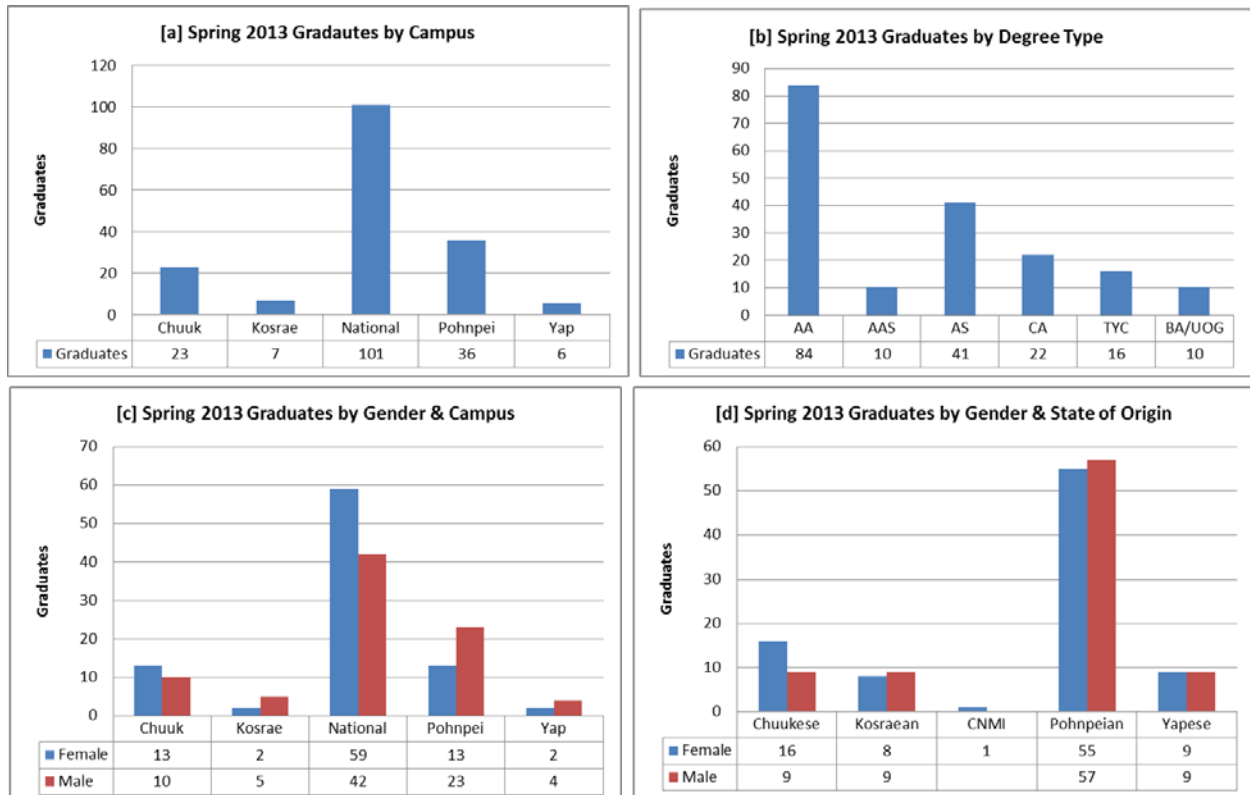


Figure 8 Graduates by campus, degree, gender and state of origin

In figure 8 we see information on spring 2013 graduates by campus, degree type, gender and state of origin. There were a total of 173 graduates at the college, plus an additional 10 graduates for the COM-FSM/UOG Bachelor of Arts program. Sixty-five percent of graduates were from Pohnpei.

FSM Fisheries and Maritime Institute

Table 1 & 2 provides enrollment and graduates for the FSM Fisheries and Maritime Institute located in Yap State. The graduation ratio is 93% or 25/27 of students in the 2nd year programs of study. It might also be noted that two of the graduating class were the first females to graduate from FSM FMI.

Table 1 FSM FMI enrollment fall 2012 and spring 2013

FMI Enrollment by Major and Year		
Program/Term	Fall 2012	Spring 2013
Programs 1st Year Students		
Fishing	13	12
Navigation	11	9
Marine Engineering	8	8
Total 1st Year Students	32	29
Programs 2nd Year Students		
Fishing	10	10
Navigation	9	9
Marine Engineering	8	8
Total 2nd Year Students	27	27
Total FMI Students	59	56

Table 2 FSM FMI graduates spring 2013

FSM FMI Graduates AY 2012/13							
Program/State of Origin	Chuukese	Kosraean	Pohnpeian	Yapese	Total	Male	Female
Advanced Certificate of Achievement in Fishing Technology	2		2	5	9	8	1
Advanced Certificate of Achievement in Navigation	3		6		9	8	1
Advanced Certificate of Achievement in Marine Technology	3		1	3	7	7	0
Total FMI Graduates	8	0	9	8	25	23	2

Summer 2013

Additional detail and information related to summer 2013 can be found on the IRPO website <http://www.comfsm.fm/?q=irpo-semester-data> (semester data files).



Figure 9 Summer 2013 enrollment and credit data

Figure 9 provides enrollment and credit information for summer 2013. FTE for summer is calculated based on 6 credits per student.

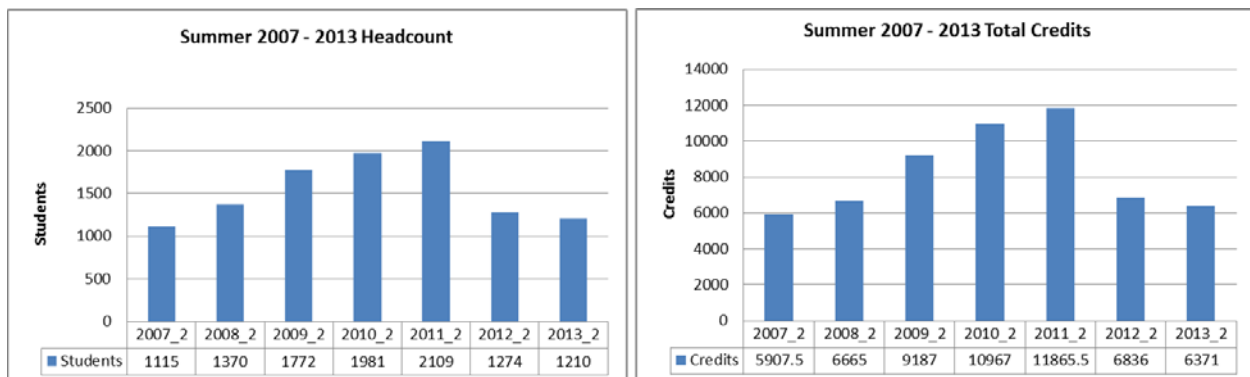


Figure 10 Summer semester multi-year comparison

Figure 10 provides trend data for summer headcount and total credits. Summer 2013 data is a significant decrease from the high in summer 2011 (for summer 2011 students were eligible for year round Pell grant).

Fall 2013

Additional data and detail from fall 2013 and fall semester trends can be found on the IRPO component of the college web site at <http://www.comfsm.fm/?q=irpo-achievement>.

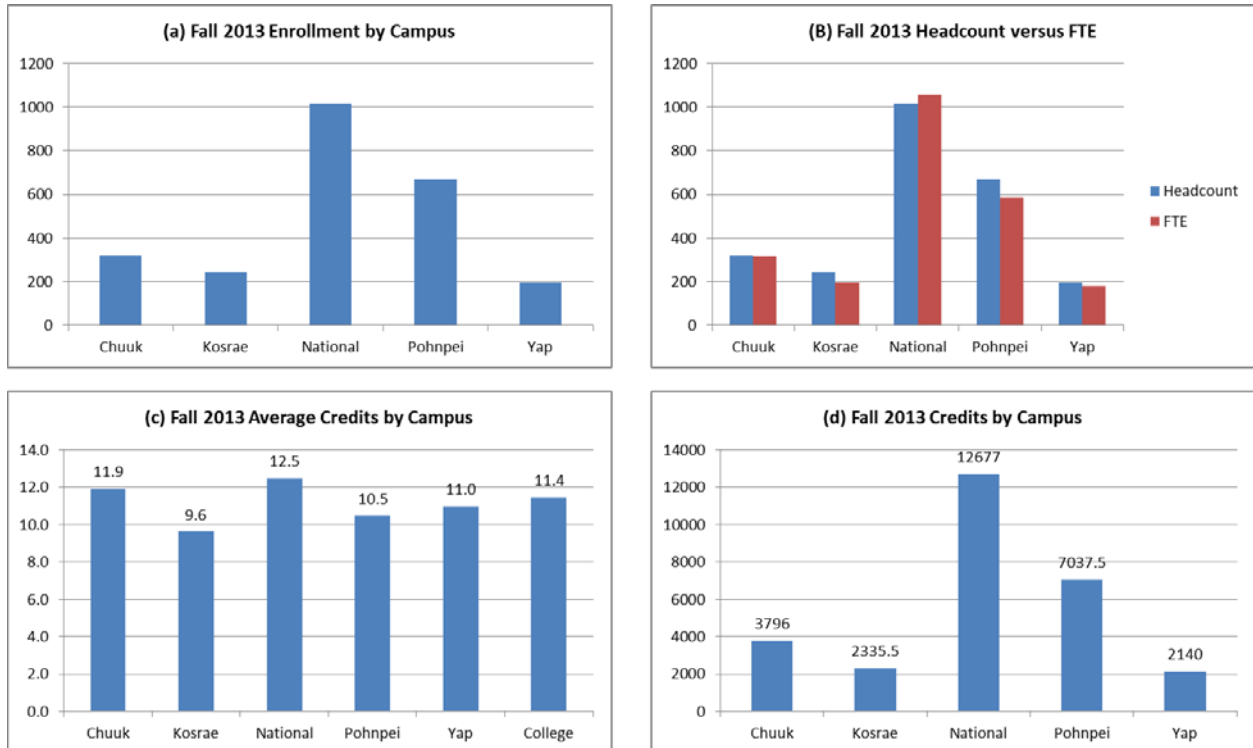


Figure 11 Fall 2013 enrollment and credits

Figure 11 provides a snapshot of the fall 2013 by (a) headcount, (b) headcount versus FTE, (c) averages credits per students by campus and (d) total credits by campus.



Figure 12 Fall enrollment trends

Figure 12 provides information on fall enrollment trends. (a) Figure (a) shows a 10.9% decrease in headcount from fall 2012 to fall 2013; (b) of note is a decrease of 31.3% in the number of new students from fall 2012 to fall 2013. The decrease in new students will have a ripple effect on enrollment in future years. (c) Provides enrollment data by state of origin. Pohnpeians represent 57.4% of the overall student population (an increase of approximately 1% and Chuukese have an approximately 1.2% decrease). (d) There has been a slight change in the gender ratios for the college in fall 2013 to 52% females and 48% males (fall 2012 - 54% females and 46% males).

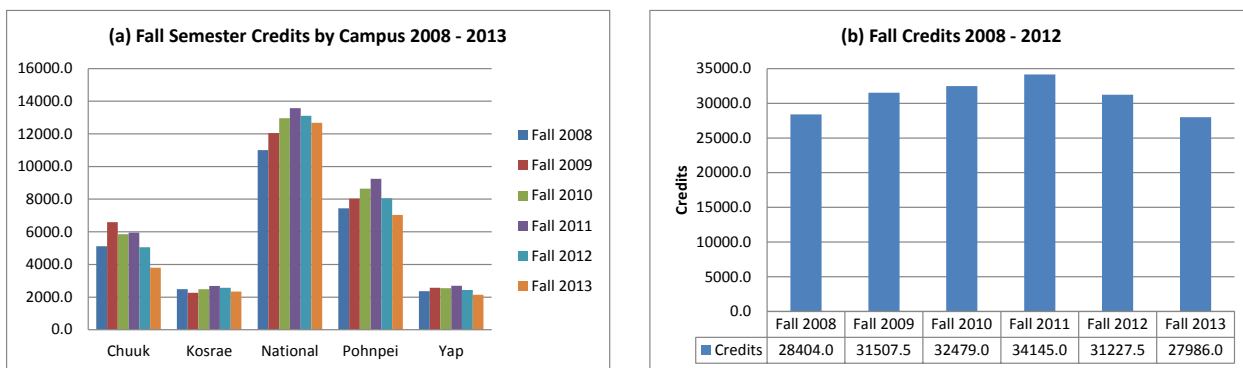


Figure 13 Fall semester credit trends

Total credits decreased by 10.4% from fall 2012 to fall 2013.

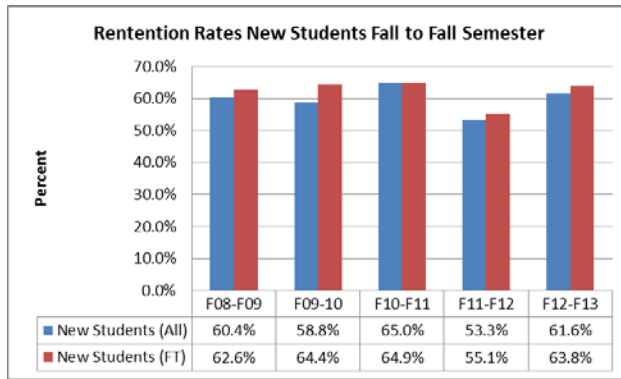


Figure 14 Fall semester retention trends

Figure 14 indicates an increase in retention rates (new students in fall 2012 who returned in fall 2013) from fall 2012 to fall 2013.

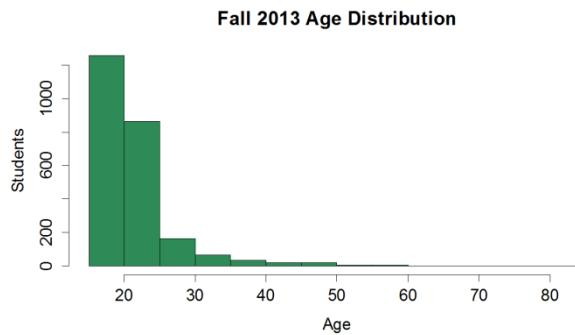


Figure 15 Fall 2013 age distribution

The student population continues to be very young with a median age of 20.0 and a mean age of 22.1.

Graduation Rates and Graduates

Additional detail and information related to graduate rates and graduates can be found on the IRPO website at <http://www.comfsm.fm/?q=irpo-achievement> under Graduation Rate Trends and Graduates Trend Data.

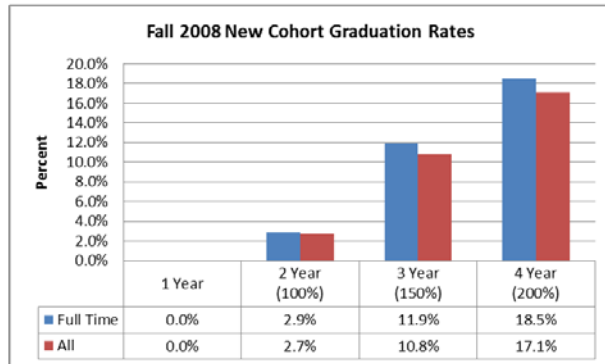
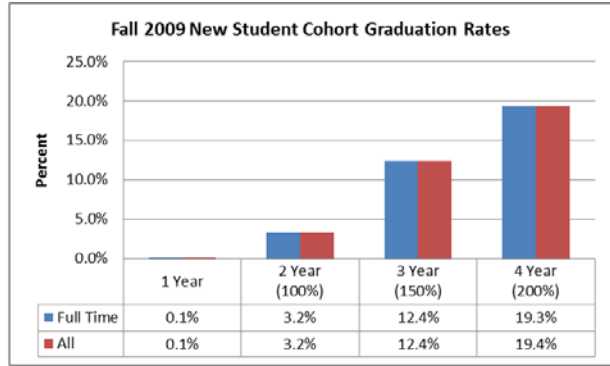
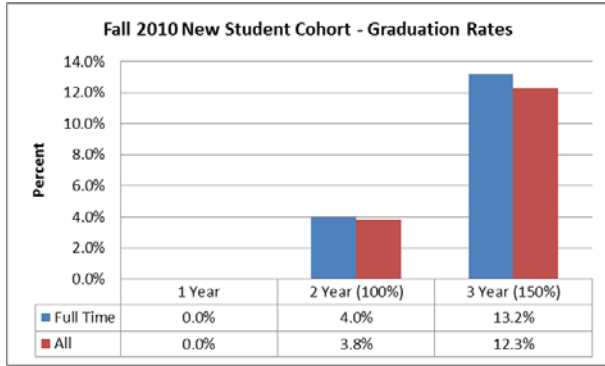


Figure 16 Graduation rates for new fall cohorts in 2010, 2009 and 2008

Figure 16 shows small increases in the fall 2010 new full time student cohort over figures for cohorts from 2009 and 2008 for three year graduation (150%) rates. While we also compute four year graduation rates, the US Department of Education is focusing on three year graduation rates. Recent changes in US federal regulations have reduced edibility for Pell grant to 12 semesters (six years for obtaining a bachelor's degree).

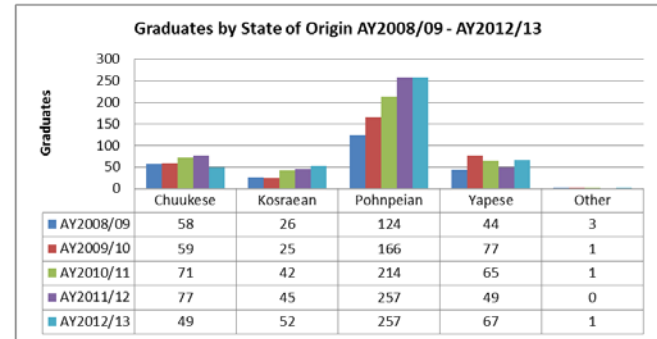
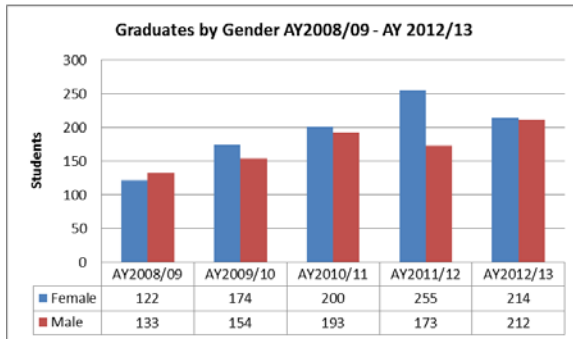
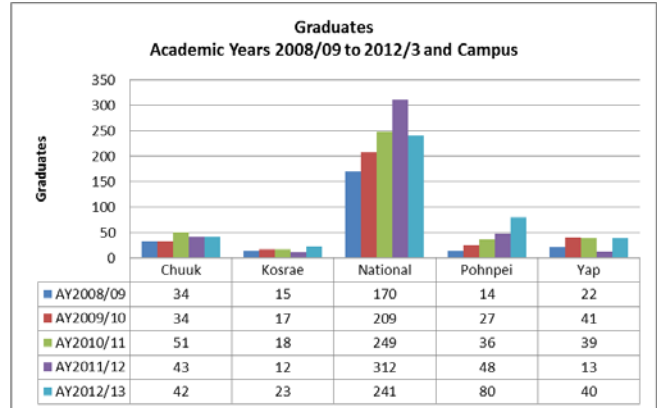
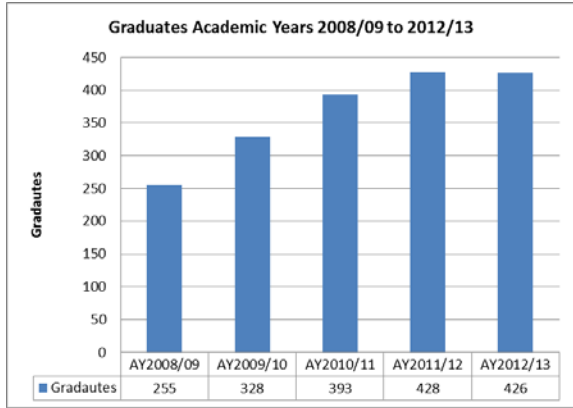


Figure 17 Graduation multi-year summary by academic year

Figure 17 provides multi-year data on graduates of the college by academic year. Graduates cover all students who earned a degree or certificate in a given academic year, while graduations rates are based on fall cohorts of new full time students.