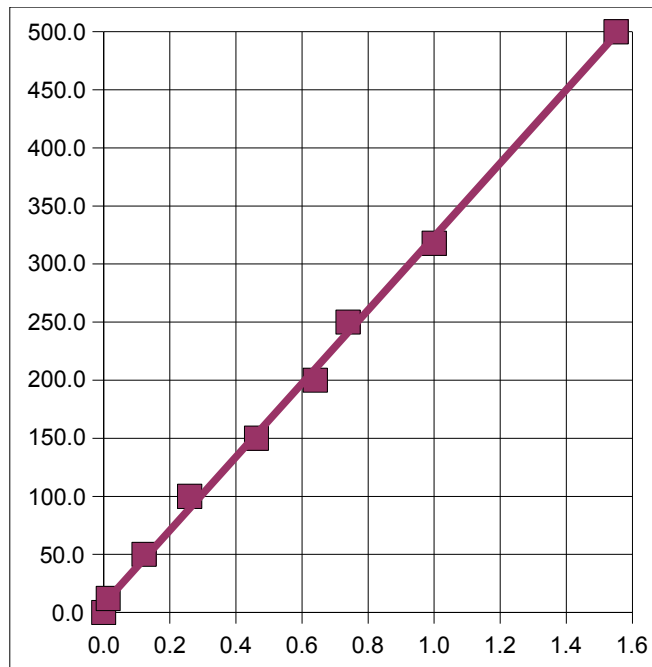
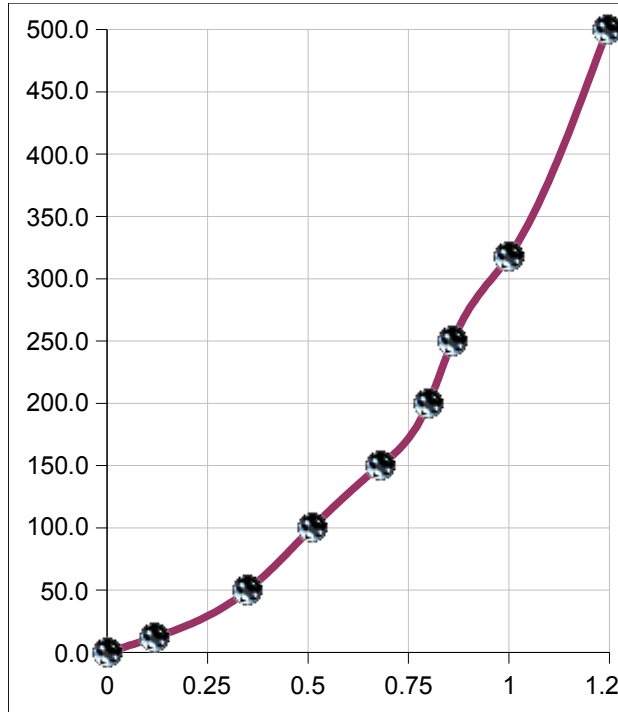


ball fall

time/sec (x)	dist/m (y)
0	0.0
0.117	12.0*
0.35	50.0
0.51	100.0
0.68	150.0
0.8	200.0
0.86	250.0
1	317.9
1.25	500.0

time <sup>2</sup> /sec <sup>2</sup> (x)	dist/m (y)
0	0.0
0.014	12.0
0.12	50.0
0.26	100.0
0.46	150.0
0.64	200.0
0.74	250.0
1.0	317.9
1.6	500.0



slope **317.93**  
 intercept **7.2**

1 **325.13**  
 1.25 **500**

Slope from rise/run  
 of last coordinate **338.02**

1 **338.02**  
 1.22 **500**

\* Accomplished by "dribbling" a golf ball and timing ten bounces. In class divided by ten but that would include "bounce ups" so this chart divides 2.34 sec by twenty.